



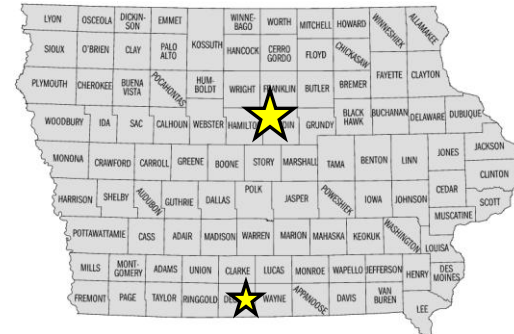
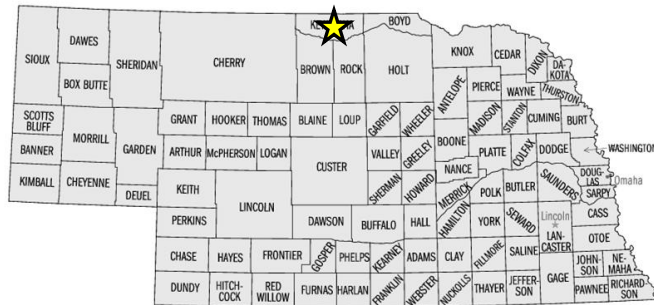
Summit Farms Overview

Agrisol Energy – July 16th, 2010

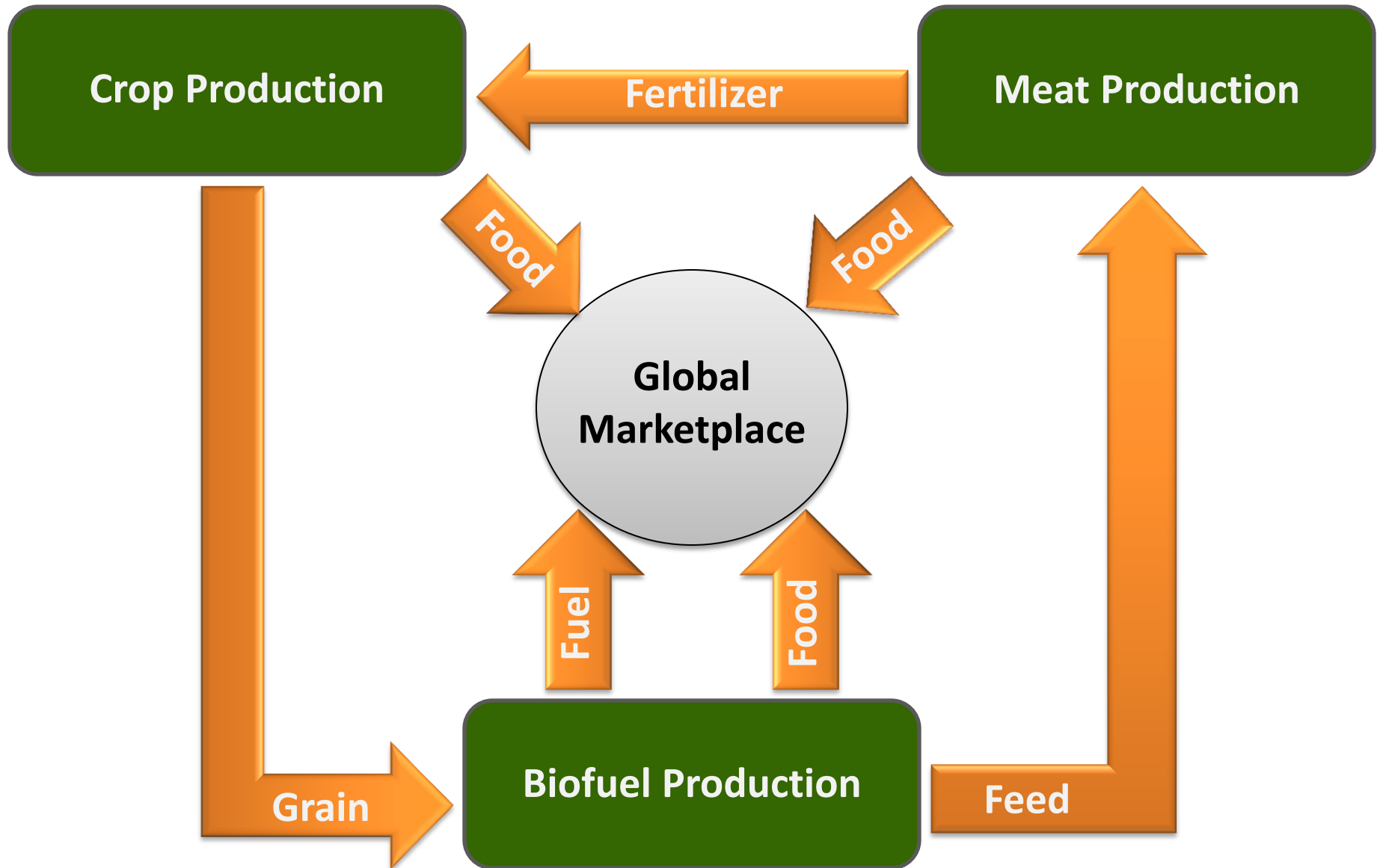


Summit Farms Overview

- Summit Farms is made up of three main business units:
 - Row Crop Production:** 17,900 acres
 - Corn Maize
 - Soybeans
 - Swine Contract Finishing:** over 150,000 spaces
 - Beef Production:** 4,300 spaces
- Headquartered in Alden, IA, with current operations in:
 - Central Iowa Alden, IA
 - Southern Iowa Leon, IA
 - North-Central Nebraska Springview, NE

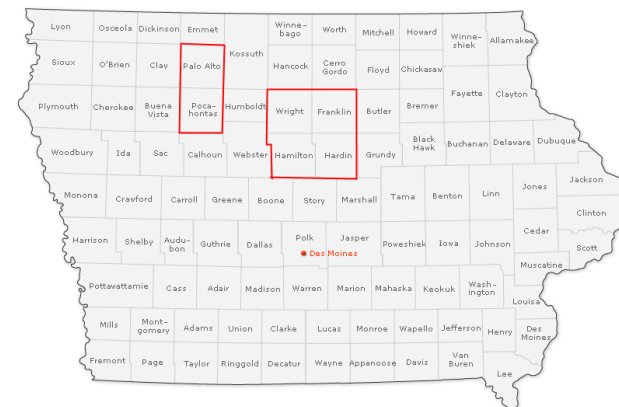


Closed loop system



Row Crop Iowa

- Currently farming 13,195 acres in two regions in Iowa
 - Central Iowa: 10,433 acres
 - Northwest Iowa: 2,762 acres



- 60% of corn acres receives hog manure
 - Application cost is approx \$ 55 / acre
 - \$ 56 / acre value after application cost
- Two major grain storage facilities: 2.5mm bu capacity
 - Buckeye: 1,900,000 bu capacity
 - Kenyon: 640,000 bu capacity

- Partnered with Stine Seed for seed / genetics



Row Crop Iowa

Row Crop Operations



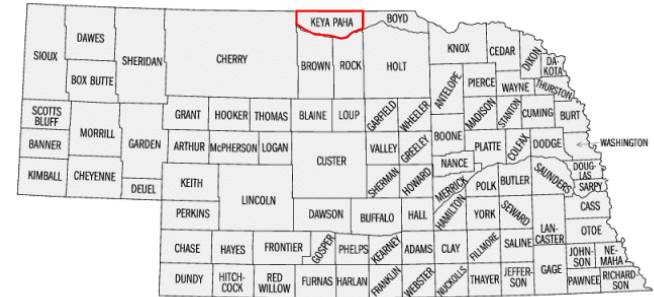


Buckeye grain storage and pork production site



Nebraska

- 12,735 total acres
 - 4,520 acres under center-pivot irrigation
 - 5,714 acres pasture
 - 2,501 acres recreational ground
- Currently farming 4,752 acres in Nebraska
 - With 2 pivots cash rented
- Grain storage: 1,100,000 bu capacity



Swine Contract Finishing

- Summit Farms manages and has ownership in 29 pork production sites, with over 150,000 pig spaces
- We have developed close relationships with three world class pork integrators
 - Smithfield
 - Christensen Farms
 - The Maschhoffs



- Manure from the swine operation benefits the row crop operation

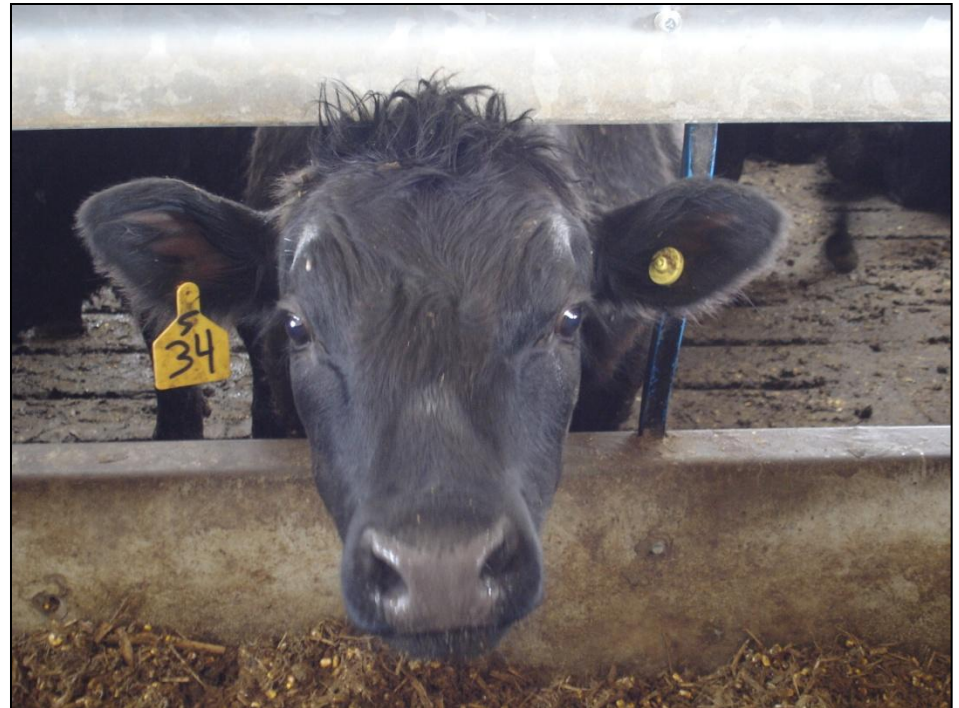
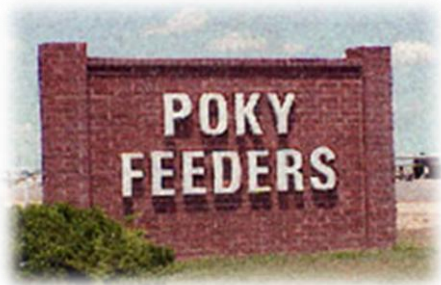
Pork Production

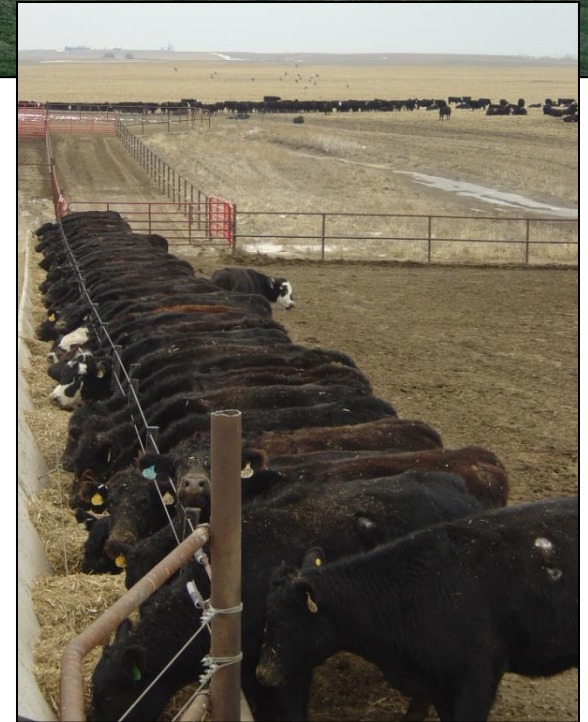
Pork production sites



Cattle Feeding

- Summit Farms finishes 8,000 head of cattle annually and feeds these cattle in Iowa, Nebraska, and Kansas
 - Open feedyards
 - Confinement barns
- Partnered with Poky Feeders, a top-tier feedyard in Scott City, Kansas





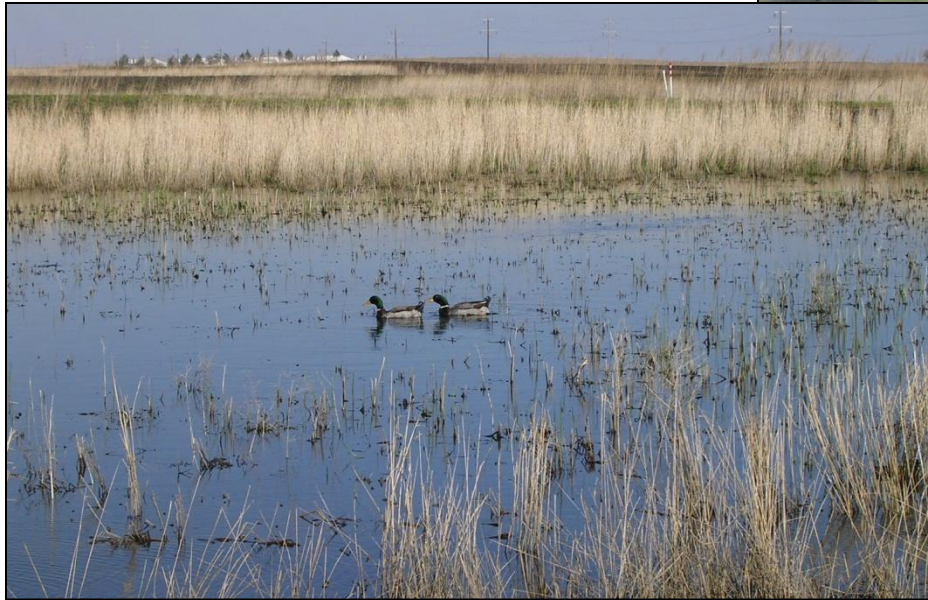
Office complex and Miller outside cattle feedyard

Boothill cattle confinement



Conservation

- Summit makes conservation and sustainability a priority:
 - 75 miles of filter strips
 - 360 acres of hunting preserves
 - 15 acres of foot plots
 - 187 acres of wetland acres



Key personnel

Team Member	Title
Bruce Rastetter	CEO
Eric Peterson	General Manager
Seth Lettow	Iowa Row Crop Manager
Evan Winters	Nebraska Manager
Jake Thomsen	Agronomist
Mitch Baum	Business Development Manager
Brian Schreck	Swine Manager
Chris Soules	Land Agent
Mike Schwarck	Production Cattle Manager
Ty Hunt	Southern Iowa Operations Foreman
Roy Penning	Maintenance Manager
Todd Steen	Controller
Cynthia Ellingson	Accounting Manager

Hawkeye Energy Holdings



Hawkeye Ethanol Plant in Iowa Falls, IA

Wind Energy



Wind energy in Iowa



Strategic Relationships



JOHN DEERE



Rabobank



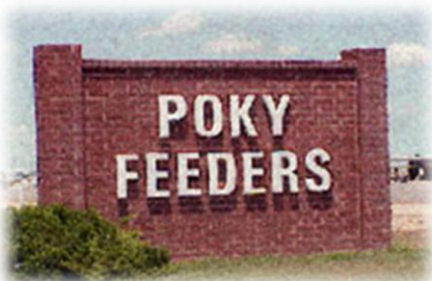
Farm Credit Services
OF ILLINOIS



Smithfield



FCStone



Tour